



Typology
Residential

Site
Schärenmoosstrasse 76-78
8052 Zurich, Switzerland
47° 25' 7.046" N 8° 33' 24.142" E

Competition/Award
Competition 1. Prize 2011

Client
Implenia Schweiz AG
Modernisation & Development
Winterthur, Switzerland

General contractor
Implenia Generalunternehmung AG
Dietlikon, Switzerland

Landscape design
bbz Bern GmbH
Bern, Switzerland

Interior design
marc briefer, Innenarchitektur | Design
Zurich, Switzerland

Photography
Eduard Hueber

Site area
10,732 m²

Area of building
9,852m²

Gross floor area
29,338 m²

Building volume
123,723 m³

Floor area
24,684 m²

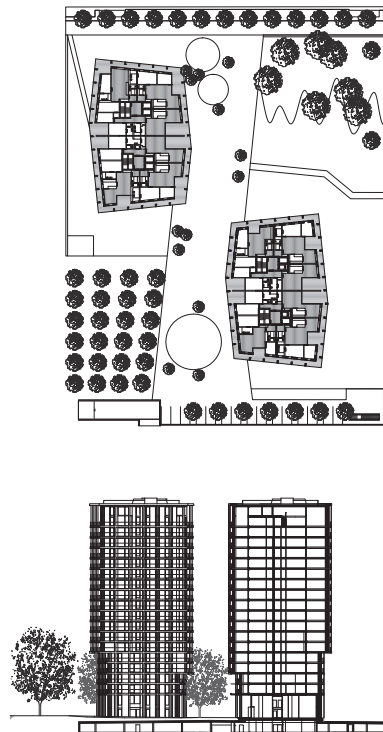
Start of planning phase
2011

Start of construction
2012

Completion
2016

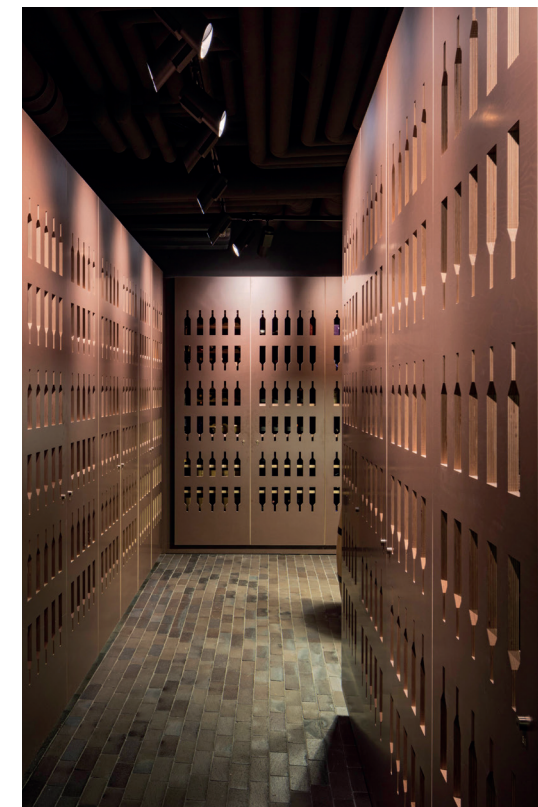
Construction cost
EUR 86 million

The Metropolitans
Zurich, Switzerland



Insights

You'll need to look twice to notice some of the individual design elements. The façade, for example, reveals a subtle plasticity shown to its best effect when the sun is low in the sky.



The remit here was to create an **ensemble that stood on its own architectural merits** and provided a meaningful addition to the surrounding built environment. The interior was to provide an upmarket residential space comprising apartments with a variety of different layouts that offered both wide-open vistas and intimacy. The name, casual yet cosmopolitan, says it all – The Metropolitans. These elegant residential towers make a statement, forging a new identity for Zurich's aspiring Leutschenbach district. The two 60 m-high towers are characterised by a bright, projecting façade in limestone concrete that underscores their clean, straight lines and gives them a timeless, exclusive feel. **Exciting dialogue.** Set in an architecturally disparate environment, these two tower blocks combine to form a shared outdoor space that also provides access to the buildings and their immediate surroundings are designed to blend into the existing exterior space, creating a coherent, exclusive urban world.

The generous, open architectural approach has produced a stylish residential development. The two buildings are encased in a framework of balconies that gives the apartments a high degree of intimacy, while the open space in front of the buildings bridges the distance to the inner façade, the building's insulating shell. The apartments measure between 75 and 200 m² and are set over nineteen storeys. **Design flexibility and prestige.** Inside, openness is once again the order of the day. The floor-to-ceiling windows and glazed balustrades offer unhindered views across the city to the distant Alps, creating wide-open vistas to the exterior and generous spatial proportions and freedom inside. The lack of interior load-bearing walls gives considerable **flexibility in layout planning**. Spacious, finished in high-quality materials and decorated with contemporary photo art, the common areas underscore the prestigious, cosmopolitan theme. Roof terraces on both towers house "sky lounges" open to all occupants complete with panoramic views provide the icing on the cake.