



FÉLIX EBOUÉ PARIS PHOTO CW M 8010

Press information

Félix Eboué
Paris, France

Project description 1|2



FÉLIX EBOUÉ PARIS PHOTO CW S1170660

A city apartment block that links past, present and future

A challenging brief

The Place Félix Eboué, a busy road junction in eastern Paris, is characterised by the hustle and bustle of city life, some striking late 19C constructions and a few newbuilds. Baumschlager Eberle Architekten were commissioned to produce a design that would occupy an infill site on one of its sides – a straightforward enough task on the face of it, at least for the architect content simply to transpose modern ideas of life and work in France's Belle Époque to the present day. The building devised by Baumschlager Eberle Architekten sets the bar considerably higher, however, creating a framework for collective living in modern-day Paris that offers potential for the future as well as maintaining links with the past.

The innovative design concept is as clear as it is complex – to bring **more light, more views and more greenery** into the existing built environment – and its aim twofold: to project the dynamism of late 19C Paris into the present and to create a building its own unique identity.

Modern homes in the making

The project has its origins in an architectural design competition organised by Emerige, a culturally sensitive property developer, working in partnership with social landlord Paris Habitat and Inovalis, a real estate investment trust from Canada. This collaboration is reflected in the space allocation plan devised to achieve the desired mix of uses.

The building houses 104 apartments – 57 privately and 47 publicly funded – and 642 m² of shop units, making it more semi-public space than closed community and lending it the sense of urban vitality so characteristic of central Paris. Baumschlager Eberle Architekten have also added a sprinkling of French architectural tradition in the form of a two-storey arcade that runs **from the street into the landscaped inner courtyard** and so attenuates the strict separation between the public and private realms.

Project description 2|2

The **green space is visible to passers-by**, thus contributing to the life of the city, and gives residents in this resolutely urban location an exceptional quality of life that can genuinely be measured in figures. The inner courtyard, an integral part of the development that guarantees the promised light, views and greenery, occupies more than a third of the 1,770 m² site

“It is our responsibility as architects to find a sensitive way of dealing with existing buildings, to create something new, something beautiful”, explains Anne Speicher, Managing Director of Baumschlager Eberle Architekten Paris. This approach is immediately apparent in the configuration of the residential space. The apartments on the main floors offer future tenants two very different lifestyle experiences. Some face the inner courtyard, its wave-like stairs reminiscent of a classical amphitheatre. Others, conceived for those who prefer a less mediated connection to the city, look out onto the Place Félix Eboué. Some even have balconies, providing private outdoor space and acting as sound absorbers. Two exclusive duplex apartments – complete with terraces – on the penthouse floor complete the residential offering, which largely comprises 3- to 4-room apartments.

Spatial organisation inside the apartments is geared to modern living. The classic ‘lounge’ – now frequently relegated to ‘TV room’ status – has served its time. Here it is merged with dining room and kitchen to create a combination that encourages communal activity and saves space. This careful spatial treatment is motivated in part by economic concerns, but also – and more importantly – by issues of resource consumption – viewed from both an environmental and a sociological standpoint.

Features

With its elegant, light-coloured lime render façade, the building stands as a landmark in the surrounding cityscape, its broad, neatly structured surface catching and reflecting the light. Brass-coloured anodised shutters and shadow lines created by the cornicing add detail to the **dialogue of colours, light and shade**. The varying heights and sculptural qualities of the building are equally striking. A key design issue lay in shaping the transition between a taller, modernist residential block on one side and a lower Belle Époque building on the other. Above the eight standard floors, the newbuild rises tower-like on the right-hand side to meet the adjacent roof line, while a stepped-back, brass-coloured pavilion matches the height of the Belle Époque building to the left, the two separated by an open space.

The result is a design that successfully reconciles the old and new faces of the Place Félix Eboué, architecture that offers a perfect blend of contextuality and individuality. Its **uniqueness lies in the association of the sculptural and the dynamic**, a contrast emphasised by rounded corners and horizontal cornicing that suggest an urban space in constant movement. The significance of Baumschlager Eberle Architekten’s new building is underscored by a conscious individuality. While the 19C buildings are for the most part organised vertically, the newbuild exhibits clean, horizontal lines. The two nevertheless share many common features. The monolithic character of the buildings, the structured nature of the facades and their high-quality surface finishes all convey **a key message**. This is architecture that plays its part in the development of an urban culture that will stand the test of time – in terms of both design and construction.

Facts and figures



FÉLIX EBOUÉ PARIS PHOTO CW M 8305

Félix Eboué

Paris, France

A new identity for the Place Félix Eboué

The new townhouse with its apartments and offices forms a landmark on the largest square in eastern Paris. The corner position and dimension alone contribute to this. But even more so is the urban architecture by Baumschlager Eberle Architekten. With its dynamism, plasticity and dignified materiality, it represents the intelligent continuation of the quality architecture of the 19th century.

Typology Residential and commercial

Clients Emerige and Paris Habitat, Paris, Frankreich

Site Place Félix Eboué Paris, Frankreich

Site area 1.770 m²

Area of building 1.100 m²

Gross floor area 9.250 m²

Cooperation -

Completion 2021

Photographie Luc Boegly LB, Cyrille Weiner CW

Team Baumschlager Eberle Architekten, Paris, Frankreich

Requests for images

The images in this pack are available free of charge for use in reporting on the residential building *Félix Eboué*. For high-resolution images for print or web, please get in touch with our press department. You will find the relevant details in the press contacts section at the end of this press information.

Press photos



FÉLIX EBOUÉ PARIS PHOTO **LB 061**



FÉLIX EBOUÉ PARIS PHOTO **CW S1170471**



FÉLIX EBOUÉ PARIS PHOTO **CW S1170399**

Press photos



FÉLIX EBOUÉ PARIS PHOTO **LB 055**



FÉLIX EBOUÉ PARIS PHOTO **LB 057**



FÉLIX EBOUÉ PARIS PHOTO **LB 060**

Press photos



FÉLIX EBOUÉ PARIS PHOTO LB 036



FÉLIX EBOUÉ PARIS FOTO LB 066



FÉLIX EBOUÉ PARIS FOTO LB 029



FÉLIX EBOUÉ PARIS FOTO LB 018

Press photos



FÉLIX EBOUÉ PARIS PHOTO **LB 007**



FÉLIX EBOUÉ PARIS PHOTO **LB 033**



FÉLIX EBOUÉ PARIS PHOTO **LB 013**



FÉLIX EBOUÉ PARIS PHOTO **LB 032**

Publication plans



FÉLIX EBOUÉ PARIS **Black plan**



FÉLIX EBOUÉ PARIS **Floor plan ground floor**



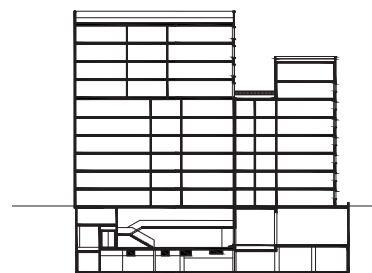
FÉLIX EBOUÉ PARIS **Floor plan level 4**



FÉLIX EBOUÉ PARIS **Floor plan level 9**



FÉLIX EBOUÉ PARIS **Façade**



FÉLIX EBOUÉ PARIS **Section**

Baumschlager Eberle Architekten



Profile

The practice

Baumschlager Eberle Architekten uses a clear, systematic approach to design and build landmark structures worldwide. Founded in Austria's Vorarlberg in 1985, with eleven offices in Europe and Asia, we are now a major architecture firm.

Portfolio

What we do

Alongside our main focus on residential and office developments, we also work in the fields of education and culture, health and sport, transport and traffic and are active in the wider planning environment, managing both interior and landscape design projects. Today we have completed some 500 projects in 20 countries spanning three continents.

Process

How we work

During the design and planning process we examine every aspect of a building project in all its complexity. This work forms the basis for clear and logical decision making, ensures quality throughout the construction process and guarantees transparency and trust.

Offices

Where we work

A local presence around the globe

We have a firm footing in both Europe and Asia with eleven offices located in a number of cities. Our presence on the ground broadens our understanding of local conditions and cultural specificities and helps us stay close to our clients.

Team

As international as our clients

We see ourselves as team players, a group of highly qualified professionals planning and implementing projects with character and passion. The team currently consists of around 270 staff members from 21 countries who communicate in 19 different languages.

Sustainability

Our contribution

Longevity is the major contribution a building can make in terms of ecology, economy and cultural value. With this in mind, we construct our buildings to meet a raft of sustainability criteria relating to resources and energy, quality and neutrality of use.

Press contacts



FÉLIX EBOUÉ PARIS PHOTO LB 053

Claudia Schwind

7, rue Debelleyne | 75003 Paris France
+33 7 85 46 51 02
c.schwind@be-architects.fr
Languages DE | EN | FR | IT

Gert Walden

Praterstrasse 33/5 | 1020 Vienna Austria
+43 676 394 26 63
g.walden@be-wien.com
Languages DE | EN

Copyright photography

Luc Boegly LB, Cyrille Weiner CW

Copyright project

Baumschlager Eberle Architekten

Baumschlager Eberle Architekten

Baumschlager Eberle Architekten is a member of :be AG, a group whose parent company specialises in investments in architecture firms across Europe and Asia. Its 16 subsidiaries are highly professional architectural design practices with over 35 years' commercial experience. They work with clear processes to the highest architectural standards and are motivated by a strong creative and innovative drive. Operating under the Baumschlager Eberle Architekten name, they have carved out a place for themselves in the world of architecture through award-winning buildings that are both highly efficient and internationally renowned. :be AG's 2226 building concept gives the group a unique selling point in the sustainability sector.

© 2021 be architects holding AG



be
baumschlager eberle
architekten



www.baumschlager-eberle.com